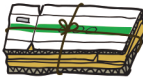




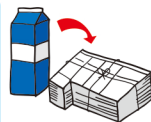
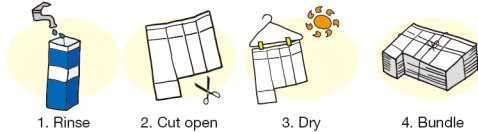
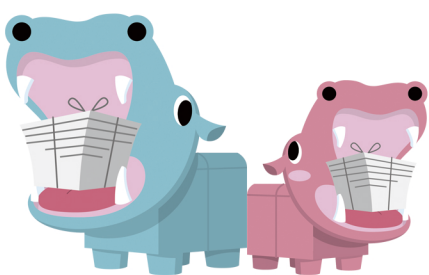


# Koshi-koko! コシココ! Accepted Items

Item	How to prepare	Remarks (items that can't be recycled, etc.)
<b>Cardboard</b> 	<ul style="list-style-type: none"> <li>● Bundle items of the same type with string on all four sides.</li> </ul>	<ul style="list-style-type: none"> <li>● Do not drop off gold or silver cardboard or empty detergent boxes as those items cannot be recycled as raw materials.</li> </ul>
<b>Newspapers Newspaper inserts</b> 	<ul style="list-style-type: none"> <li>● Do not secure with packing tape.</li> <li>● Avoid placing in plastic bags, cardboard boxes, or other containers.</li> </ul>	<ul style="list-style-type: none"> <li>● Newspapers and newspaper inserts can be bundled together.</li> <li>● Do not include anything other than newspapers and newspaper inserts.</li> </ul>
<b>Books Magazines</b> 		<ul style="list-style-type: none"> <li>● Remove metal parts, for example from binders, and any materials other than paper, including plastic.</li> <li>● Metal the size of staples or smaller can be left.</li> </ul>
<b>Miscellaneous waste paper</b> 	<ul style="list-style-type: none"> <li>● Place recyclable paper other than the above inside paper bags. (Bundle with vinyl string.)</li> </ul>	<p><b>OK:</b> Paper boxes, pamphlets, paper bags, copy paper, wrapping paper, cardboard cores from toilet paper and kitchen wrap, etc.</p> <p><b>NOT OK:</b> Waterproof paper (paper cups, paper plates, instant noodle containers, etc.), paper with heavy odors (detergent, soap, etc.), adhesive boards, crimped postcards, dirty tissue paper, etc.</p>
<b>Used clothing, etc.</b> 	<ul style="list-style-type: none"> <li>● Launder and place in a clear or semi-clear plastic bag.</li> </ul>	<p>Wet clothing and clothing with unpleasant odors cannot be recycled. Items other than used clothing</p> <p><b>OK:</b> Undershirts and underwear, socks, tablecloths, towels, scarves, curtains (except fittings), etc.</p> <p><b>NOT OK:</b> Dolls, stockings, etc.</p> <p>Bedding</p> <p><b>OK:</b> Sheets, blankets</p> <p><b>NOT OK:</b> Cotton-stuffed items like mattresses and pillows</p>
<b>Milk cartons (Paper cartons)</b> 	<ul style="list-style-type: none"> <li>● Rinse with water, cut open with scissors, and bundle about 30 together with string.</li> </ul>	<ul style="list-style-type: none"> <li>● Cartons with silver-colored backing cannot be recycled.</li> </ul> 

新聞/雑誌/段ボール  
受入無料



古紙回収ステーション  
コシココ!

- Not all stations accept all items.
- Collected waste paper will be recycled by a Koshi-koko! partner.



Be sure to flatten cardboard boxes.  
Bundle with string on all four sides.

## What is Koshi-koko!?

Koshi-koko! is a waste paper collection station where you can drop off recyclables any time. Now you can easily recycle waste paper whenever you like.

## Koshi-koko! features

1. Drop off items **any time**.
2. There's **no cost**.
3. Drop off **as many, or as few, items** as you wish.
4. It's a great way to **go green**.